

# PRODUCT DATASHEET

## Confidex Carrier Classic™



Special washable label for returnable plastic containers with strong adhesive.

### ELECTRICAL SPECIFICATION

**Device type**

UHF RFID / EPCglobal Gen2v2

**Operational frequency**

Global 865-928MHz

**IC type**

Impinj M780™

**Memory configuration**

EPC 496 bit; User 128 bit; TID 96 bit

**EPC memory content**

Unique random 96bit EPC in every label

**Read range (2W ERP)\***

On plastic up to 18 m / 59 ft

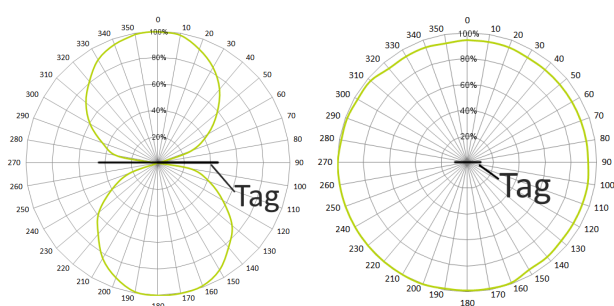
On cardboard up to 15 m / 49 ft

**Applicable surface materials\***

Non-metallic surfaces

\* Read ranges are theoretical values that are calculated for non-reflective environment. Different surface materials may influence performance.

### RADIATION PATTERNS



### MECHANICAL SPECIFICATION

**Tag materials**

Printable white PET, resin ribbon recommended

**Background adhesive**

High performance acrylic adhesive specifically for low surface energy plastics

**Weight**

0,1 g

**Delivery format**

2000 pcs on reel

**Pitch on reel**

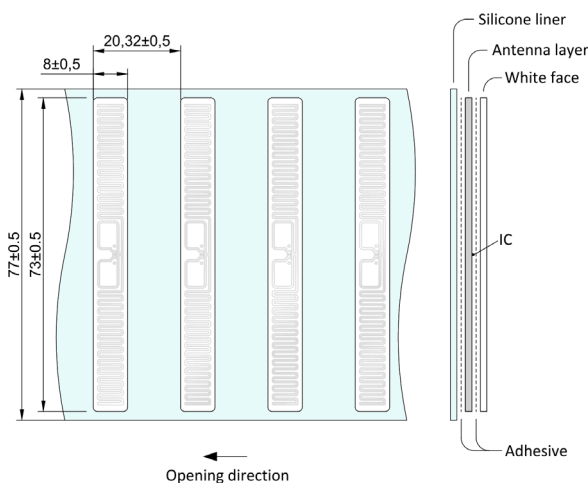
20,32 mm / 0.8 in

**Reel core inner diameter**

76 mm / 3 in

**Tag dimensions**

73 x 8 x 0,2 mm / 2.87 x 0.31 x 0.01 in



### ENVIRONMENTAL RESISTANCE

**Operating temperature**

-35°C to +85°C / -31°F to +185°F

**Ambient temperature**

-35°C to +85°C / -31°F to +185°F

**IP classification**

IP68, tested 5 hours in 1m deep water

**Washing resistance**

Tolerates industrial washing processes. Tested according to IPX9K with water at 60° angle, 80-100bar, and 80°C. Water flow rate 14-16l/min.

**Chemical resistance**

No physical or performance changes in:

- 168h Salt water (salinity 10%) exposure
- 168h Motor oil exposure
- 168h Sulfuric acid (10%, pH 2) exposure
- 24h NaOH (10%, pH 13) exposure
- 20min Acetone exposure

**Storage condition**

1 year in +20°C / 50% RH (shelf life for adhesive)

**Expected lifetime**

Years in normal operating conditions

Values in the table are the best recommendations; resistance against environmental conditions depends on the combination of all influencing factors, exposure duration and chemical concentrations. Thus, product's

final suitability for certain environmental conditions is recommended to be tested. Contact Confidex for more specific information.

## PERSONALIZATION OPTIONS

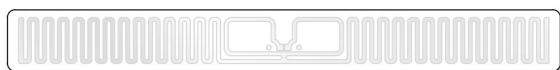
### Pre-encoding

- Customer-specific encoding of EPC or user memory. Locking permanently or with password.

### Customized printing

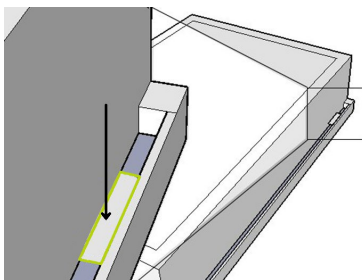
- Customer-specific layout including logo, text, numbers, barcodes etc.

## INSTALLATION INSTRUCTIONS



← Tag polarization →

While planning the installation, most recommended location for the Confidex Carrier Classic™ label is in a position, where the structure of the identified asset provides protection against mechanical stresses such as impacts or jet streams. There's no need for line of sight between reader and label so it can be installed for example like shown in picture below.



Ideal installation conditions are +20°C (+68°F) / 50% RH. For exceptional conditions, please contact Confidex. Adhesive of the label will provide best adhesion in 24 hours after the installation. Bond strength can be improved with firm application pressure. Always clean and dry the surface for obtaining the maximum bond strength.

During attachment to the identified asset, please avoid touching the background adhesive. If the location on the asset needs to be changed, please use a new tag instead of re-placing the used one; the adhesion will suffer from the re-placement.

Minimum bending diameter of the Confidex Carrier Classic™ is defined to be 50mm. Do not bend the label below the limit. Never touch the IC location. IC is a sensitive electrical component and can be damaged if unexpected pressure is applied on it.

## ORDER INFORMATION

**Product number:** 3004546

**Product name:** Confidex Carrier Classic™ M780

For other versions, additional information and technical support contact Confidex Ltd.

### DISCLAIMER

THE MATERIALS, PRODUCTS AND SERVICES ARE SOLD SUBJECT TO ITS STANDARD CONDITIONS OF SALE, WHICH ARE INCLUDED IN THE APPLICABLE DISTRIBUTOR OR OTHER SALES AGREEMENT. ALTHOUGH ANY INFORMATION, RECOMMENDATIONS, OR ADVICE CONTAINED HEREIN IS GIVEN IN GOOD FAITH, CONFIDEX MAKES NO WARRANTY OR GUARANTEE, EXPRESS OR IMPLIED, (i) THAT THE RESULTS DESCRIBED HEREIN WILL BE OBTAINED UNDER END-USE CONDITIONS, OR (ii) AS TO THE EFFECTIVENESS OR SAFETY OF ANY DESIGN INCORPORATING ITS PRODUCTS, MATERIALS, SERVICES, RECOMMENDATIONS OR ADVICE. EXCEPT AS PROVIDED IN CONFIDEX STANDARD CONDITIONS OF SALE, CONFIDEX AND ITS REPRESENTATIVES SHALL IN NO EVENT BE RESPONSIBLE FOR ANY LOSS RESULTING FROM ANY USE OF ITS MATERIALS, PRODUCTS OR SERVICES DESCRIBED HEREIN.

Each user bears full responsibility for making its own determination as to the suitability of Confidex products, materials, services, recommendations, or advice for its own particular use. Each user must identify and perform all tests and analyses necessary to assure that its finished systems incorporating Confidex products, materials, or services will be safe and suitable for use under end-use conditions. Nothing in this or any other document, nor any oral recommendation or advice, shall be deemed to alter, vary, supersede, or waive any provision of this Disclaimer, unless any such modification is specifically agreed to in a writing signed by Confidex.